

NEUROBIOLOGY CLUB WEEKLY NEWS



February 5th, 2024

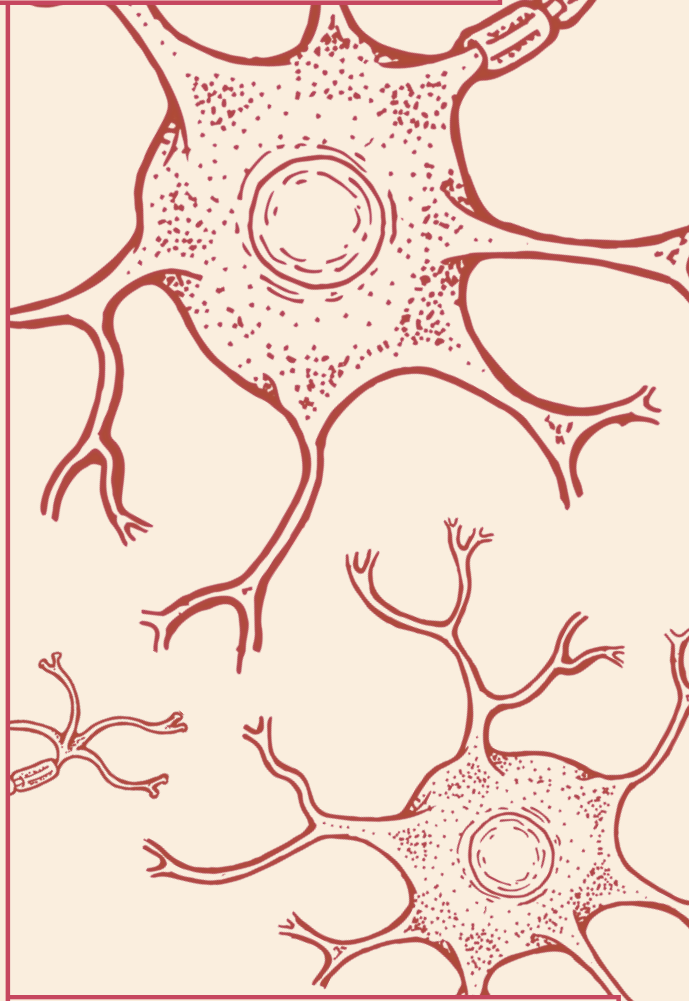
Instagram: [@uwneurobiologyclub](#) Email: uwneurobiologyclub@gmail.com

UPCOMING CAREER PANEL

Hey, you! Yeah, that's right, you: the STEM student who can't stop stressing about what career to pursue after undergrad. There's a career panel coming up this week featuring some pretty cool scientists with connections to yours truly: THE UDub. Panelists include Carrie Stine, a 5th year PhD student getting ready to enter the job market; Vyom Raval, a 4th year MD-PhD student with some unique job options, and Dr. Amitoz Manhas, a neurosurgeon practicing out of Overlake Hospital just over the lake in Bellevue. I'm not saying stopping by will solve your existential crisis, but hey, with panelists like these, it's worth a visit. Mark your calendars, bring your best questions, and come find out a little bit about your options after undergrad! The event takes place this Wednesday, February 7th, at 5pm in room 110 of the Life Sciences Building. RSVP [here!](#)

DEMONSTRATION WITH DR. HALE

What were you doing last Monday? I spent my evening with the Neurobiology Club and guest speaker, Gregory Hale, an MIT graduate with a PhD in neuroscience. We learned all about his very own neuron modeling tool: NeuronBench. What's that you say? "Neuron modeling sounds like a blast!" Yeah... you really missed out. The simulation allows scientists and students to visualize neuron communication and activity in an easy, realistic, and measurable manner. But, that's not all! There's also no need for lengthy downloads like other neuron modeling programs. NeuronBench runs on a browser and models can even be shared through a single URL. WOW! If you'd like to take a look for yourself, you can visit Greg's website at docs.neuronbench.com. If you missed out on Dr. Hale's demo, feel free to check out the program for yourself and email us with questions and comments. I'm sure Gregory would love some more feedback for his program.



REGISTRATION! REGISTRATION! REGISTRATION!

Well, it's everyone's favorite time of the quarter again. The sun is out later in the day, the temperature is rising, and we all get to put off studying for midterms by spending hours searching for classes on MyPlan. With Spring Registration just around the corner, the Neurobiology Club thought it might be useful to highlight some resources. First, be sure to check out [DawgPath](#) for information on prerequisite maps and recent grade distributions. Also, take a look at [RateMyProfessor](#) for reviews on the professors teaching classes you're interested in. However, take those reviews with a grain of salt as people tend to either review professors they love or hate.

With that out of the way, here's the inside scoop on some STEM electives from current club members! Dave recommends **GH 101** and said that "it was super interesting to learn more about population health patterns and how determinants of health influence them!" Chris thought **BIOL 130** was "a great introductory course to neuroscience and had generous grading." Ananya, the Club President, insists that you register for a class next winter: **PHIL 442**, because "of its interesting focus on neural research and Stephen Hawking." How helpful for Spring Registration... Shreya warned that **PHIL 242** "did not live up to expectations" because it had "a lot of busy work" and "wasn't very engaging." Mikko claimed that **BIOEN 461** "is a neural tech studio class with a focus on building an industry product." Give yourself a break from studying. Go take a look now!

PSST! DOWN HERE

Are you interested in becoming part of the Neurobiology Club News Team? Send an email to uwneurobiologyclub@gmail.com highlighting something interesting about yourself and why you think you're a good fit for the job.